



WORLD LEADERSHIP SCHOOL

IMPACT REPORT 2023



2023 SNAPSHOT

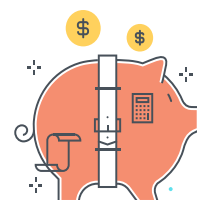
Student Programming

1,294 students and educators have logged more than **3,000 hours** of engagement with local communities across the globe.



"This program expanded my perspective on the world, my sense of self, informed me in ways that I was previously unaware of and helped me to build more empathy."

- Student, Chapin School, Greece Program



\$70,684 shared in support of community projects and NGO contributions!

"[This program] helped me realize the value of time spent getting to know others and their cultures. And this goes from people in the community to even people I go to school with."

- Student, Loomis-Chaffee School, Costa Rica Program

715 students participated in our purpose clarification process through a **Youth Purpose Summit/SPARK** journey.



"I really enjoyed getting to discuss questions with classmates I've never talked to before. I'm also glad I got to lay out aspects of my life and spend time thinking about how they connect."

- Student, Punahou School, Youth Purpose Summit

Professional Learning

4,663 adult learners impacted by WLS Professional Learning from around the world.



"My experience was one of growth and connection. I was provided the opportunity to be inspired and time to work with my colleagues. I left being better able to describe my personal and professional purpose as an educator."

- Faculty, Watershed School

“

Our school works with World Leadership School to facilitate our middle school trips program and couldn't be more pleased. WLS programs consistently lead our students to explore purpose, and align with our values and approach to education as an IB school. I also participated in the Salmon River Program for School Heads, which helped me discover myself in a new way and reenergize the commitments to the work I am meant to do. I trust and enthusiastically recommend World Leadership School!

”

Sam Adams

Head of School, Seven Peaks School

“

World Leadership School, and Ross Wehner in particular, led the People Operations Team at Khan Academy through a purpose journey that helped us connect our individual purpose to our work as a team. Thank you for the amazing work you did to align our purpose to our work.

”

Regina Ross

Chief People Officer, Khan Academy

PARTNERS





MISSION

World Leadership School partners with K-12 schools to reimagine learning and create next-generation leaders. We help schools bring purpose to learning in two main ways: we take students out into the world and coach teachers to bring purpose to learning.

PURPOSE IN LEARNING

THINKING, FEELING, AND DOING

World Leadership School made major progress in 2023 towards clarifying its vision of **Purpose Learning**, or the idea of learning that integrates **thinking** (skills and content), **feeling** (emotion, empathy, identity), and **doing** (making and creating, community engagement, real-world problem solving, etc). At the center of these three domains, students have a great chance of connecting with purpose in learning - and in themselves.

During 2023, Ross Wehner and Jessica Catoggio published articles on Purpose Learning in magazines such as *Independent School* and the *Triannual Journal* of the East Asia Regional Council of Schools. We also further developed the **WLS Purpose Planner**, which helps teachers design curriculum through a lens of thinking, feeling, and doing, and the **WLS Purpose Learning Audit Tool**, which helps schools identify where they are in the journey to Purpose Learning and establish the next steps.

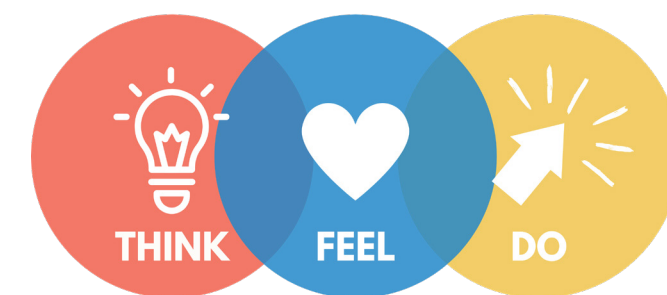
Over the last decade, schools have made a broad shift away from content memorization to skills-based learning. But even competency-based learning can feel meaningless unless it is designed around the humanity of each student. Purpose learning allows students to explore two basic human questions: “Who am I?” and “How do I contribute to something bigger?”

Purpose learning has profound implications for the future of K-12 learning, including how we assess students, organize the school day, divide knowledge into subjects, and define what it means to be a teacher — and a student. In an age of artificial intelligence, where everything that can be automated will be automated, our uniquely human ability to tell stories, make meaning, and follow purpose will be more important.

Purpose helps students be happier, healthier and manage stress more effectively. But only 20 percent of high school students and 10 percent of middle school students are purposeful, according to Stanford’s Youth Purpose Study. We believe that K-12 schools can create visible and intentional strategies that help teachers and students to explore, discover and articulate purpose.

Stanford’s Center on Adolescence defines purpose as “a stable intention that is meaningful to self and consequential for the world.” In other words, it’s a core of meaning on the inside that connects to an action on the outside. It can be very simple, such as “to grow and give.”

At World Leadership School, we know we can do better. We help schools pursue deliberate strategies in response to the question we believe is guiding the future of learning: **“How can schools help students explore, discover, and articulate purpose?”**



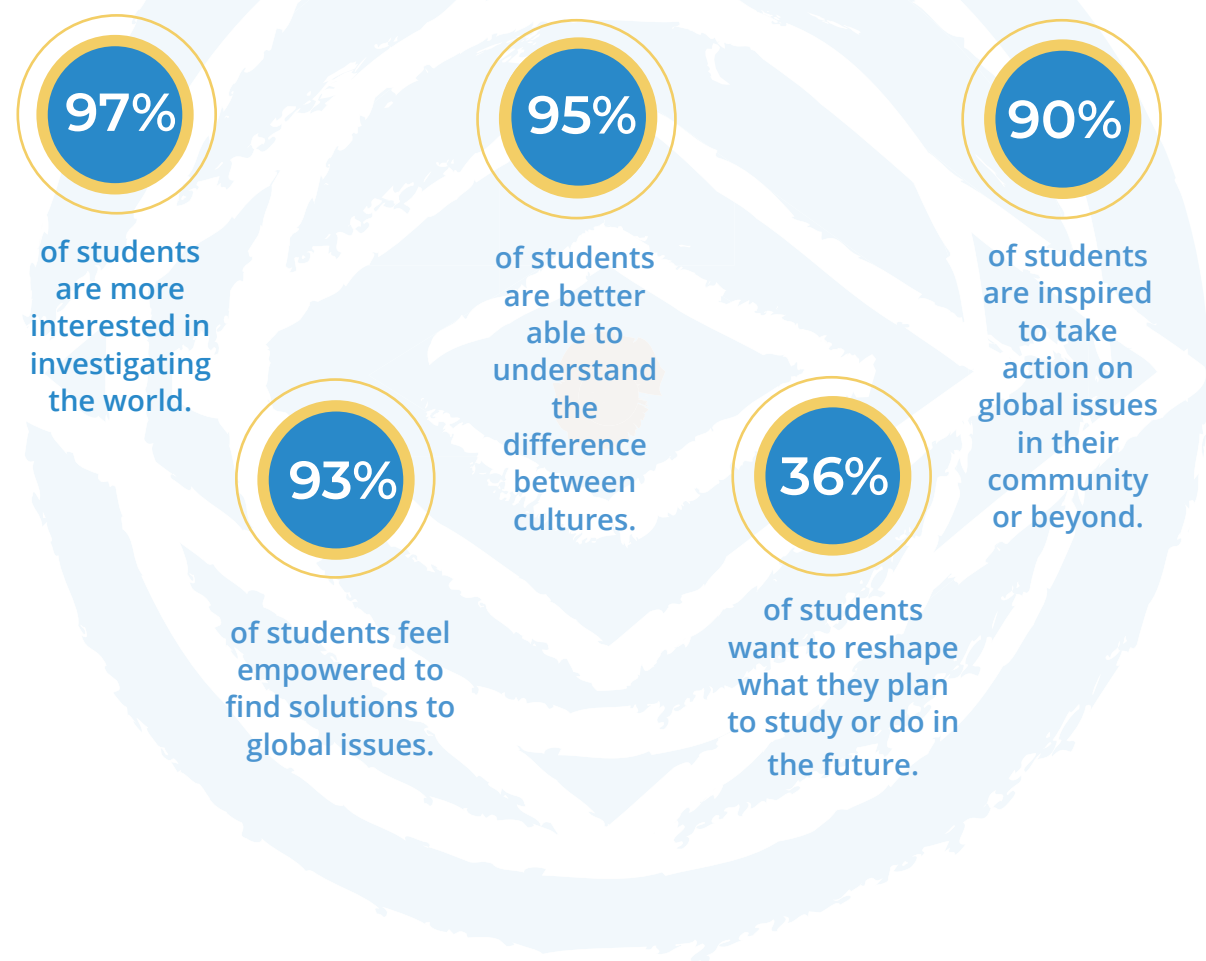
IMPACT ON SCHOOLS

STUDENT PROGRAMMING

Every year WLS works with K-12 schools to design and deliver immersive partnership-based travel programs in Latin America, Africa, Asia and the USA. We see travel as a powerful tool for guiding students towards lives of purpose and helping educators transform classrooms.

On our travel programs, students **disconnect, decenter and re-envision**. They disconnect from technology and their normal rhythms of life; they become decentered through immersive experiences; and they re-envision their lives by working alongside local students and community leaders.

After a WLS program:



“ This program helped me learn more about myself as a person who contributes to this world. I was inspired to listen more about other people’s stories and understand different perspectives.

”

Student
Miss Porter’s School, Costa Rica Program, Chilamate

“ I have gained problem solving skills as well as a new perspective on the world and my relationships. There were many challenging moments but realizing I was able to adapt helped me grow immensely.

”

Student
French American International School, Morocco Program

IMPACT ON SCHOOLS

PROFESSIONAL LEARNING & CONSULTING

Our Professional Learning team engages with schools in a variety of meaningful ways. Through workshops, coaching, summits, educator travel, and beyond, we seek to support schools as they bring greater purpose to learning and make their classrooms more human. We help teachers connect in three basic ways. Teachers first connect to their own professional purpose, then to each other as teammates, and finally to the pedagogies that best meet the needs of their students. By connecting to the “why”, teaching teams explore the “how” and the “what.”

Our team offers a variety of workshops that help teachers explore purpose and shift toward equitable, learner-centered pedagogies such as **Project Based and Purpose Learning**. The goal of these workshops is to create an immersive experience where teachers can connect, design, and inspire each other with actionable ideas. Workshops are offered in both an online, virtual setting, and in-person based on the needs and resources of each school. Additionally, we offer **Risk Management** workshops for educators that travel off campus with students and **Audit + Design Workshops** for schools that are seeking to analyze and improve upon their global programming.

While our workshops generate key insights and connect educators to the pedagogical “big picture”, our Coaching Institute, helps educators take those insights and develop them into programs and learning experiences that drive

100% of our participants said our Educator Travel Program in Belize exceeded their expectations

100% participants on the Salmon River Program for School Heads said the experience helped them renew their energy, connect with themselves and others, and reflect on what lies ahead.



Salmon River Program for School Heads

WLS' Salmon River Program for School Heads, now in its third year, is an immersive experience on Idaho's iconic Salmon River that offers a unique opportunity for school heads to build community, gather energy, and explore game-changing ideas.

"This experience brought me back to myself, and gave me a deep sense of peace that I hadn't felt in a long time. It was profound to listen and share stories with colleagues, to laugh and experience connection and joy. I am a better, more renewed head of school and human being, thanks to my time on the Salmon River."

-Katherine Dinh, Head of School Marin Country Day

school-wide change. Through coaching, teacher teams work with a WLS coach as they advance along the WLS Continuum, which creates an organized work plan to ensure connection and results. The Coaching Institute supports both pedagogical shifts and the development of risk management practices.

Further supporting our belief about personalized choice in learning, we offer a Self-Paced Intro to Project-Based Learning, action-oriented Toolkit Workshops, an Educator Travel Program, and a Heads of School Rafting Trip on the Salmon River in Idaho. We believe that teachers with the right space and support can transform schools with their energy and ideas around purpose-driven learning.

2023 Professional Learning By the Numbers:

4,663

4,663 educators from around the world participated in our life- and career-changing professional learning experiences

90

90 Schools in North America were impacted by our professional learning program.

10

We collaborated with **10 independent school associations** at the state, national, and global levels to provide programming to member schools. These include: National Association of Independent Schools, Virginia Association of Independent Schools, Tennessee Association of Independent Schools, Independent School Experiential Education Network, and Tri-Association, among others.

5

Through our nonprofit partner World Leadership Foundation, we successfully ran our **5th Annual K-12 Purpose Summit** in Boulder, Colorado in the Winter of 2023, which included **75 educators** from schools around North America.

"For me this was the best of educator travel - it pushed me to stretch and try new things and gave me the tools and time to reflect on my teaching. The itinerary was stellar."

- Participant Belize Educator Travel Program

WALKING TOGETHER WITH COMMUNITIES AROUND THE WORLD



World Leadership School's programs are rooted in **responsible** and **sustainable community engagement** theory. We studied different community engagement strategies before developing our approach, "Walking Together." Our partnerships with communities, schools, NGOs, artisan collectives, and other organizations are built within the context of their own journeys. We strive to overcome challenges and avoid the pitfalls of traditional community service work through these partnerships and by studying the work of local community leaders and how they are taking action on their own communities. Our partners work with us to co-create activities and experiences. Therefore, each partnership is different.

We strive to invest in local leaders by hiring coordinators and instructors from within the communities where we work and are committed to paying a premium for supplies that are directly sourced from our partner communities. World Leadership School is committed to improving the natural environments we visit through reforestation, poverty reduction, and long-term education initiatives.



Since 2009 students and donors have raised \$2,504,292 for community contributions.

GLOBAL PRESENCE

As World Leadership School continued to emerge from the pandemic in 2023, we began working again in over 25 communities across 8 countries. Since 2009 participants and donors have raised \$2,504,292 for community contributions that have supported a wide range of NGO partnerships and social impact projects. These donations support the work of NGOs and help fund community projects such as school buildings in Kenya, computer labs in Belize, and covered walkways and child-sized bathrooms in Costa Rica.



WHO WE ARE

We are a tight-knit team of committed individuals. Together, we have decades of experience around innovative educational practices in the classroom, wilderness and diverse global environments. We are proud to foster students of purpose and enrich lives with our immersive partnership-based travel program. Our **staff** develops and coordinates our travel programs around the world and in the United States as well as coordinates our educator development initiatives. In addition to our director of professional learning, our **teacher coaches** partner with faculty in order to create student-driven, world-connected classrooms. Our **instructors** are amazing, intrepid, humorous, and wise experiential educators. Our **coordinators** live and work near our host communities and nurture the long-term relationships that are the bedrock of the work we do.



“ I believe strongly in the power of experiential learning to transform individuals of all ages, and as program leader, I had the privilege of witnessing the curiosity, determination and openness with which these young people approached this adventure. Students were challenged daily to step outside of their comfort zones, confront prior assumptions, break through language barriers and work together as a cohesive unit. They built relationships and were exposed to an incredible array of leadership styles, and were able to learn directly from strong local leaders who are affecting change in their community. ”

Meghan Edwards
Assistant Head of Middle School for
Academics and Global Education
La Jolla Country Day School

“

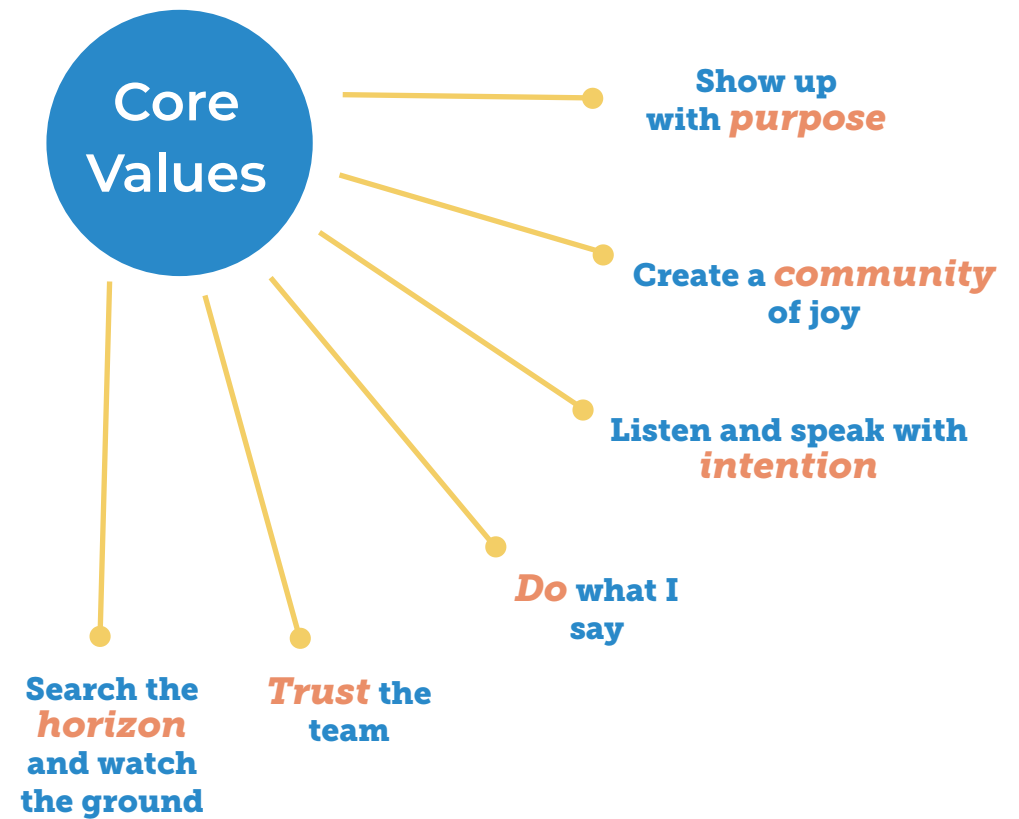
World Leadership School truly embodies what it means to be the change you want to see in the world and serves as a great example of what B Corps standards represent! To be a part of something like World Leadership is to inspire not just the students that go on these amazing programs but the communities they get to become a part of along the way. It's a chance to exchange lenses with the world around you while learning about yourself and your own leadership skills! The opportunity of connecting the world to our culture has meant the world to me. Thank you to everyone that has made these experiences so meaningful!

”

*Naneshka “Nani” Galvez
WLS Puerto Rico Coordinator*



OUR CORE VALUES



World Leadership School is driven by the mission to “reimagine learning and create next-generation leaders.” We do this by helping schools take students out into the world on immersive, partnership-based travel experiences, and by coaching educators to bring purpose to learning. We believe that K-12 schools should be the ultimate platform for launching children into lives of purpose.

Our mission was never more important than during the COVID-19 pandemic, when our travel programs became disrupted. During this time we followed our mission and focused on new ways of working with schools, including virtual immersive travel experiences, online educator classes and modules, and new forms of team coaching.

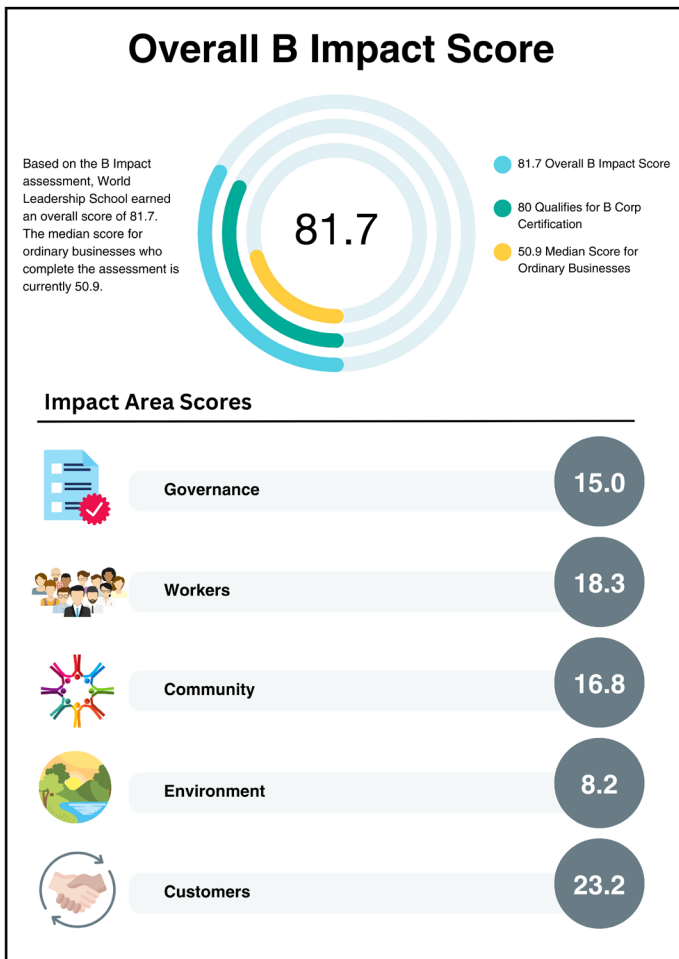
Apart from our mission, our community at World Leadership School are based on our core commitments. The WLS commitments are not performance goals. Rather they are action statements that describe how we want to show up for each other and for our schools.



B-CORPORATION

In addition to being a certified B Corp, WLS took the additional step to switch its status to a Colorado Public Benefit Corp in 2014. The public benefit statute requires that all PBCs assess and report on their overall social and environmental performance, benchmarked against a third-party standard that meets statutory criteria of transparency and credibility.

WLS is a Founding B Corp and since 2017 has gone through the B Impact Assessment (BIA) every two years. We believe that the BIA is the most credible tool we can use to measure our impact on our workers, community, environment and our customers. Every assessment audit has challenged our thinking and given us a process to assess and evaluate the way we are doing things.



“ The WLS program we adopted to deepen our students’ learning aligned with our ongoing global education efforts. Specifically, the program was designed to strengthen our year-long study of renewable energy and sustainability. We greatly valued WLS’s ability to partner with our teachers while providing a professional development opportunity. It has been a fantastic experience, one that we hope to sustain for years to come. WLS’ ability to work with LS students and teachers is phenomenal and I wholeheartedly recommend them. ”

Karina Baum
 Director of Global Education Buckingham Browne & Nichols School, Boston, MA

